

# 2019 Midwest Directors Meeting



*An overview of 2018 Farm Bill Implementation  
and opportunities for the Lake Erie Watershed*

**Jim Inglis**

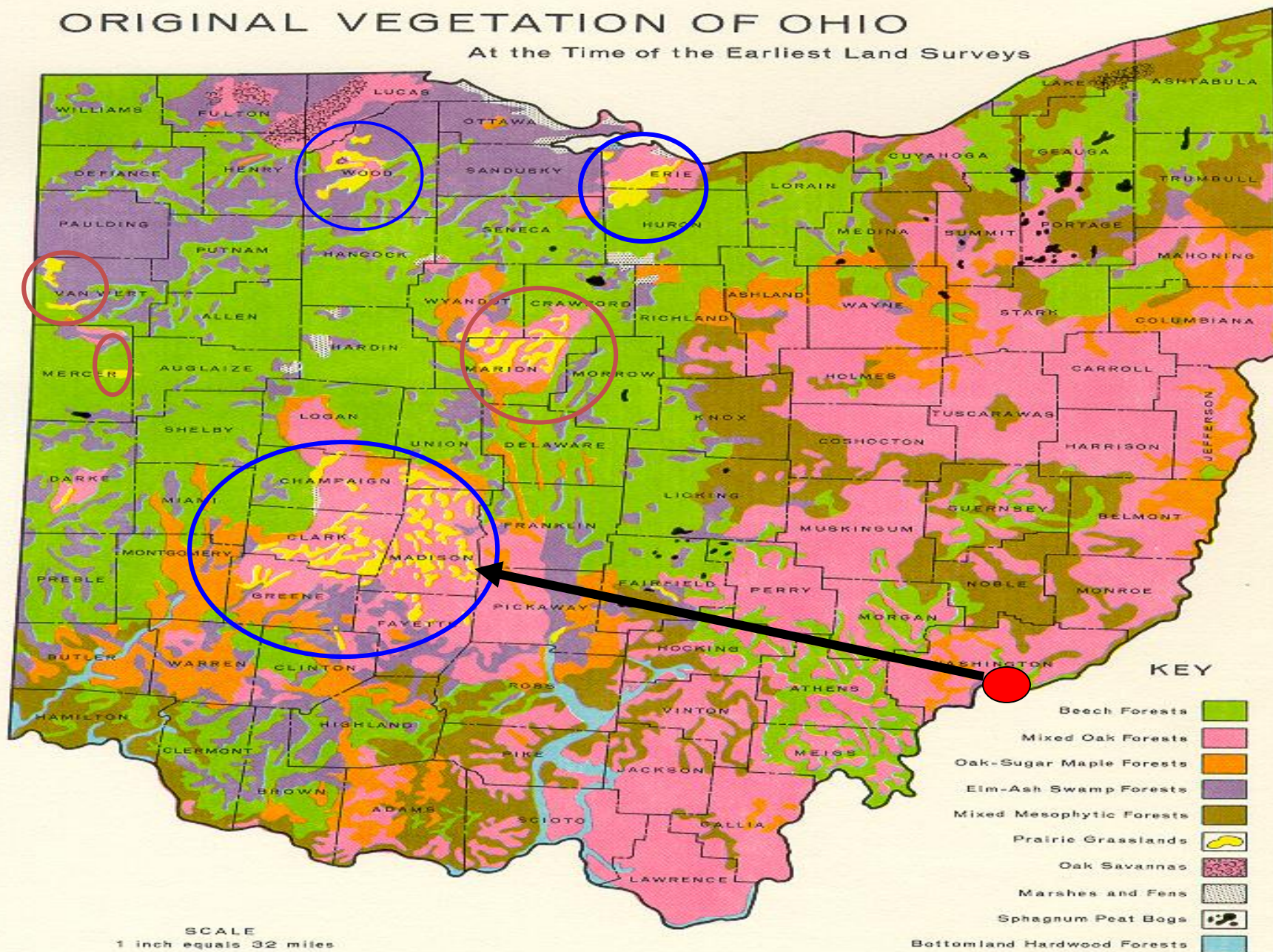
**Director of Governmental Affairs**





# ORIGINAL VEGETATION OF OHIO

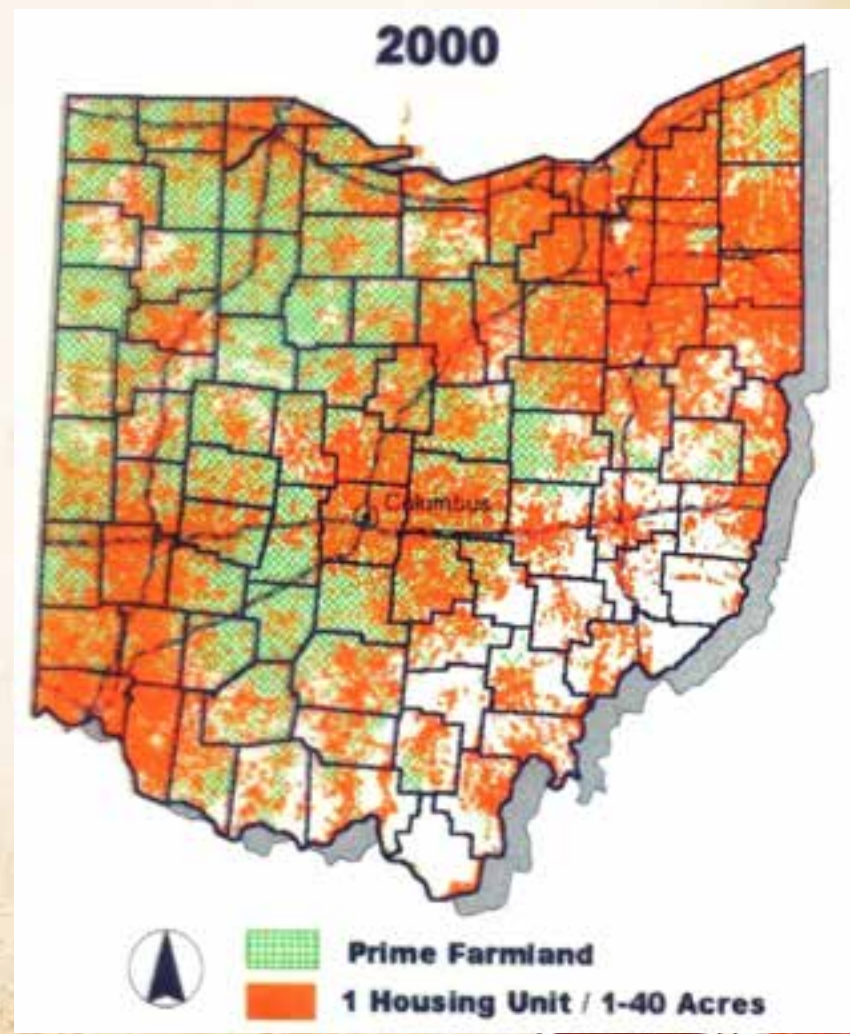
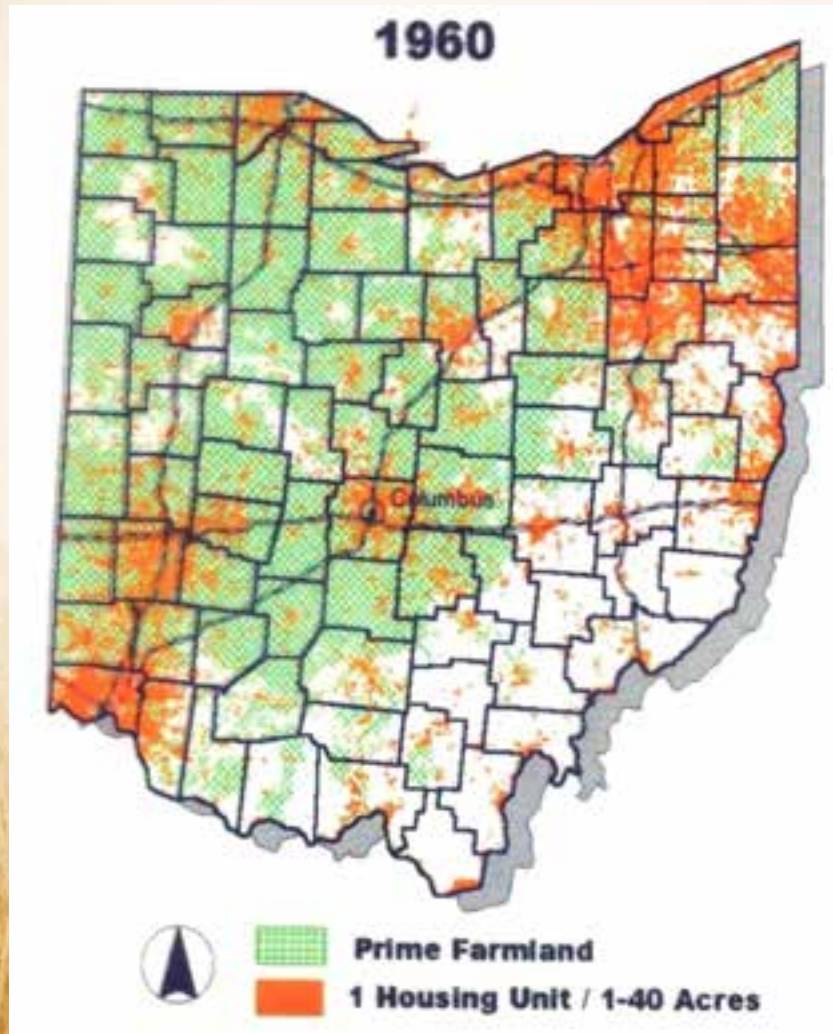
At the Time of the Earliest Land Surveys



SCALE  
1 inch equals 32 miles



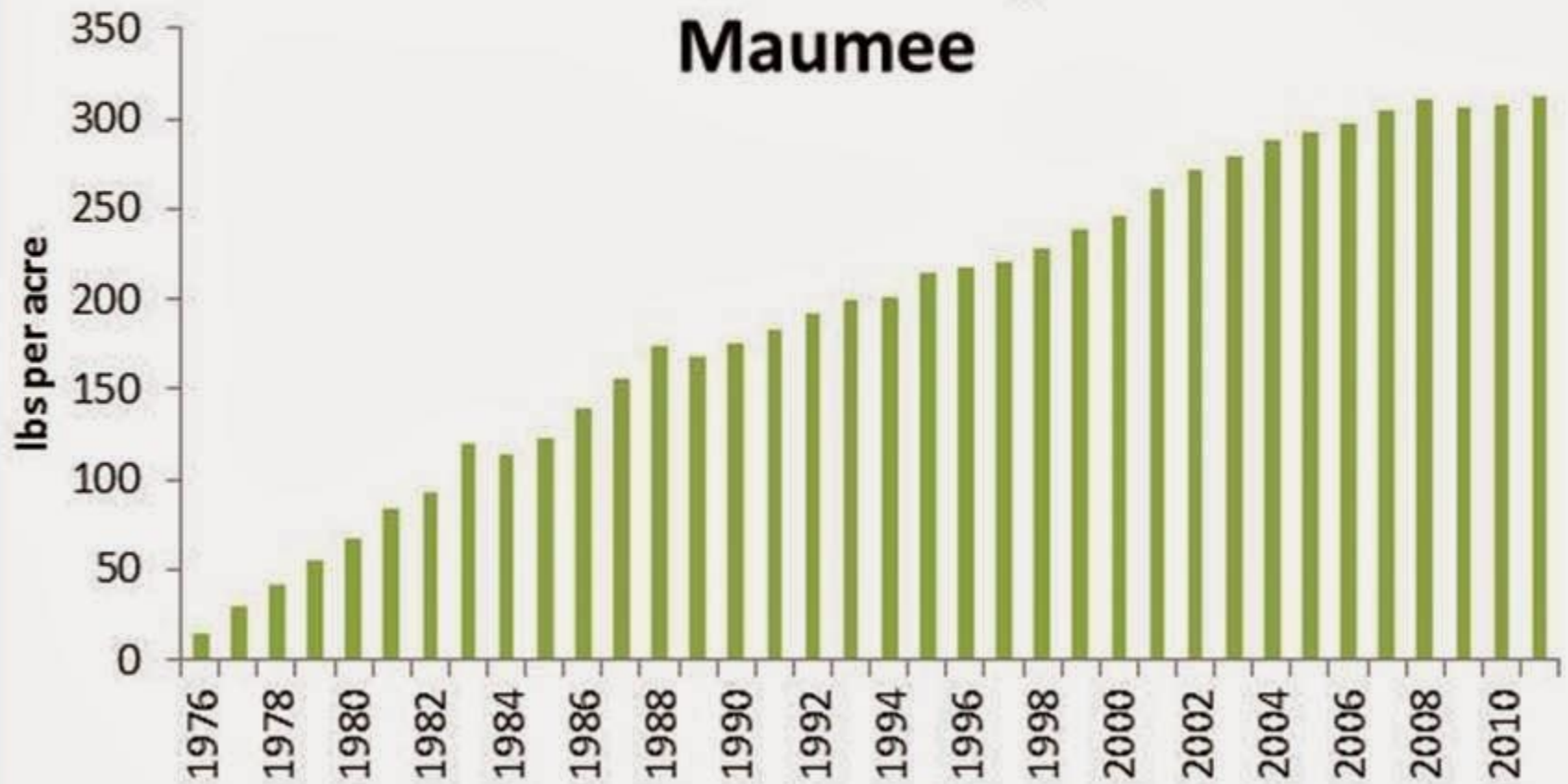
# ~7M acres of farmland developed







## Cumulative Excess P per Acre - Maumee





## Lake Erie Phosphorus Loads

External Phosphorus Sources to Lake Erie 1981 – 2007 Water Years (27 Years)	Average Phosphorus Load, Metric tons/yr	Percent of Total Phosphorus Load
Nonpoint sources	6,467	63.1%
Point sources	2,201	21.5%
Atmospheric Deposition	496	4.8%
Upper Lakes	1,080	10.5%
Total Average Annual Load	10,244	100%

3

1

# Record bloom

The toxic-algae bloom on the Ohio River covers more than two-thirds of the river's length. It started upstream of Wheeling, W.Va., and was first spotted on Aug. 19. As of Friday, the bloom stretched to Tell City, Ind., about 650 miles downstream. The bloom produces a toxin that can sicken people and kill pets, and it is costing water-treatment plants along the river hundreds of thousands of dollars to treat.



THE COLUMBUS DISPATCH



# What can we do about it?!?!





# 2018 Farm Bill - \$30 Billion in funding in the next 5 years!!



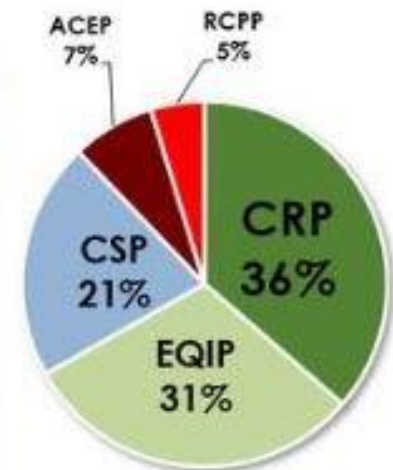
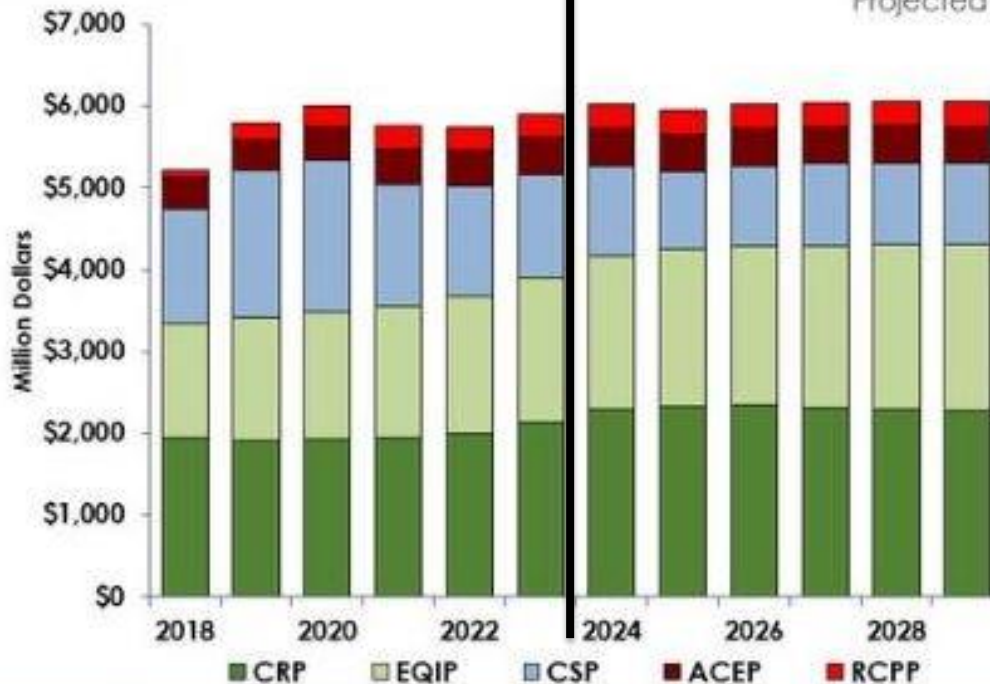
## CONSERVATION FUNDING AT \$6.6B ANNUALLY

**CCC Programs: \$23.7 Billion**  
\$82 Per Acre Average  
**2019-29**

### CONSERVATION PAYMENTS

**\$66,012,000,000**

Projected Payments During 2019 to 2029



Allocation of  
Conservation  
Spending 2019-29

Source: Congressional Budget Office, Farm Bureau Calculations



# Farm Bill - The Major Changes

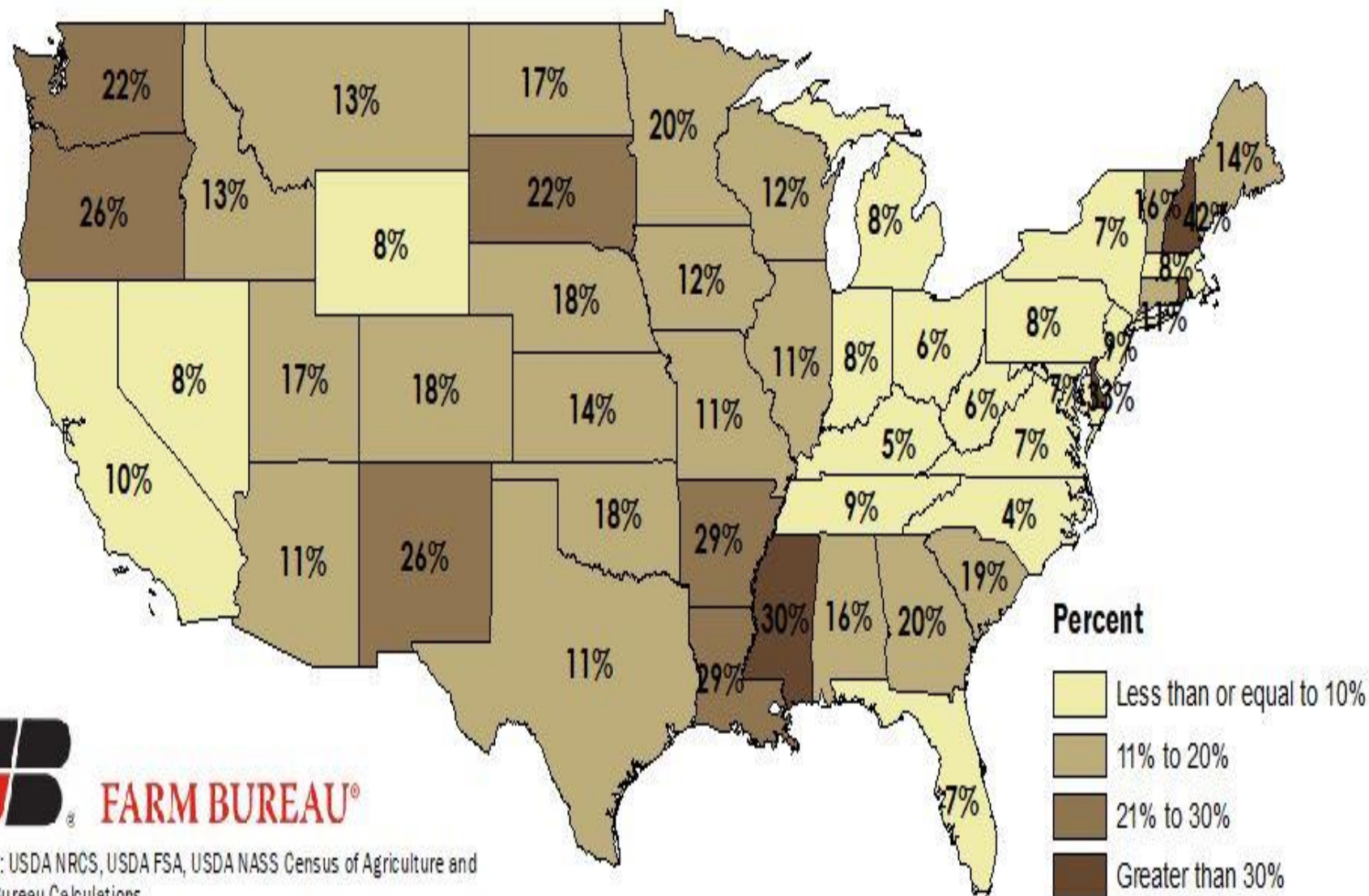
- CRP – Increased to 27M acres – includes 2m acre floor of Grasslands CRP
- Codifies CREP in language, Retains cost share and incentives, Moderates rental payments for contracts, State acre allocations
- NEW! Clean Lakes, Estuaries and Rivers (*CLEAR30*). Allows 30yr contracts option
- NEW! Soil Health and Income Protection Program (SHIPP) – 50K acres in Prairie Pothole
- ACEP – \$450M/yr - More funding than ever before
- EQIP – Designates 10% of all funding for wildlife (~\$200M/yr)
- VPA –HIP – “Open Fields” \$50M total to states
- RCPP – Now Stand alone \$300M per year
- CSP – reduced funding, but expanded opportunities – Acres to \$\$
- Sodsaver and Conservation Compliance linked to Crop Insurance continues





### Figure 5. Conservation Acreage as a Percent of Total Agricultural Land

*Includes Acreage on Active and Completed CRP, CSP and EQIP Contracts*



FARM BUREAU®

Source: USDA NRCS, USDA FSA, USDA NASS Census of Agriculture and Farm Bureau Calculations





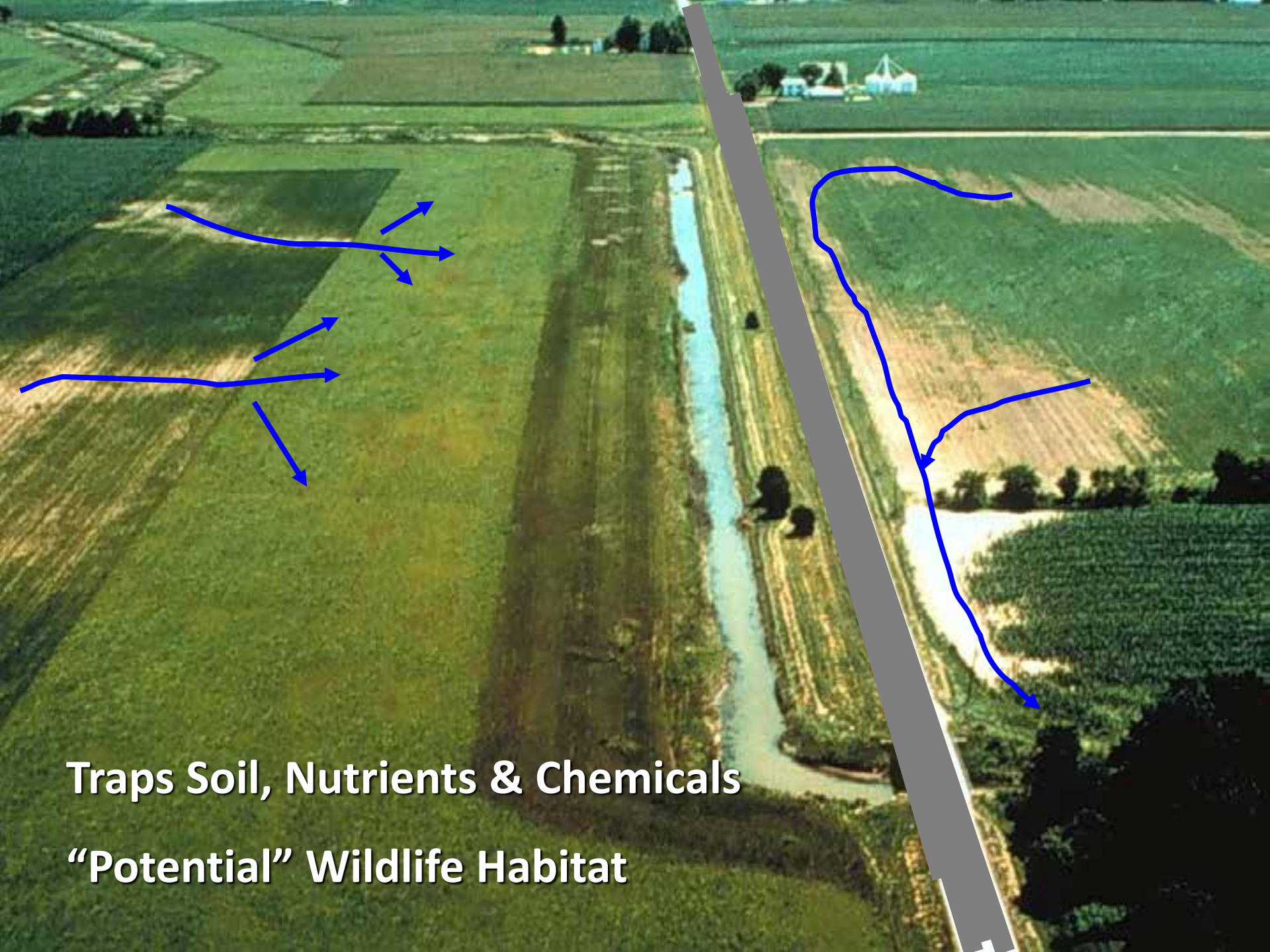
River

This aerial photograph shows a landscape restoration project. At the top, a dense line of green trees marks the edge of a river, indicated by a blue line. Below the river, the land is divided into several areas. In the upper left, a small, irregularly shaped pond is surrounded by grass. In the upper right, a larger, more circular pond is visible, with a small brown building and a white path nearby. The central and lower portions of the image are dominated by a large, irregularly shaped wetland area. This area is characterized by a mix of green water and large patches of light brown, exposed sediment or sand. The surrounding land is covered in green grass. Three text labels are overlaid on the image: 'River' at the top, 'Grasslands' in a yellow box on the left, and 'Restored Wetlands' in a yellow box at the bottom right.

Grasslands

Restored Wetlands





Traps Soil, Nutrients & Chemicals

“Potential” Wildlife Habitat





*"Nutrient loading is one of the largest contributing factors in the decline of water quality nationwide. Preliminary data from this study suggests that the saturated buffer has reduced Phosphorus and Nitrogen runoff concentrations by upwards of 50% to 75%, while the retention ponds capture millions of gallons of runoff every year, ultimately acting as irrigation reservoirs which have been tied to significant increases in production yields. Combining innovative practices like the ones implemented at this site can help provide a sustainable and positive path forward as we all work together to improve our natural resources."*

*– Stephen J. Jacquemin, Ph.D.,  
Wright State University – Lake  
Campus*



- Retention Ponds
- Field Tile Drainage to East Pond
- Field Tile Drainage to West Pond
- Saturated Buffer and Riparian Zone
- Tile Intercept and Reroute
- Pivot Water Line
- Water Control Structures
- Center Pivot Irrigation System

## FOR MORE INFORMATION PLEASE CONTACT

VanTilburg Farms Inc.  
(419) 586-3077  
vantilburgfarms.com

Wright State University - Lake Campus  
Agriculture and Water Quality  
Education Center  
(419) 586-0300  
<https://lake.wright.edu/>

## FOUR MILE CREEK AGRICULTURE RUNOFF AND RETENTION PROJECT

*"This project is a win-win by greatly improving water quality through soil erosion and nutrient loading reduction while simultaneously creating on field water storage to improve agricultural production as well as creating riparian wildlife habitat."*







# PRECISION AG WORKSHOP

Partnerships Turning Red Acres Green

Renaissance Schaumburg Convention Center Hotel (Rooms E-G)



JOHN DEERE

Friday, February 22, 2019 from 10 a.m. to 3:30 p.m.

## \$35 WORKSHOP REGISTRATION

1 year PF membership, lunch, entry for Henry Golden Boy Farmer Edition Rifle, Daily pass to National Pheasant Fest & Quail Classic show floor, **This is an \$80 value!**

Agenda designed specifically for Farmers, Precision Specialists, Agronomists, and Conservationists

Discover new approaches to put your data to work to maximize ROI for every acre

Learn from other Farmers



# What do we need to watch out for?

- We need to deliver \$30B – USDA is understaffed –Partnerships needed to deliver
- 7.7M acres of CRP expires/re-enrolled by Oct 2020 – Dec 2019 general signup (1<sup>st</sup> in 4 years)
- Conservation Priorities – Congress/Admin
- Engaging Congressional Delegations (SAFE, CREP need)
- Baseline issues by Farm Bill 2023?





# Thank YOU!!

Craig Armstrong / Pheasants Forever Life Member



Jim Inglis

[jinglis@pheasantsforever.org](mailto:jinglis@pheasantsforever.org)

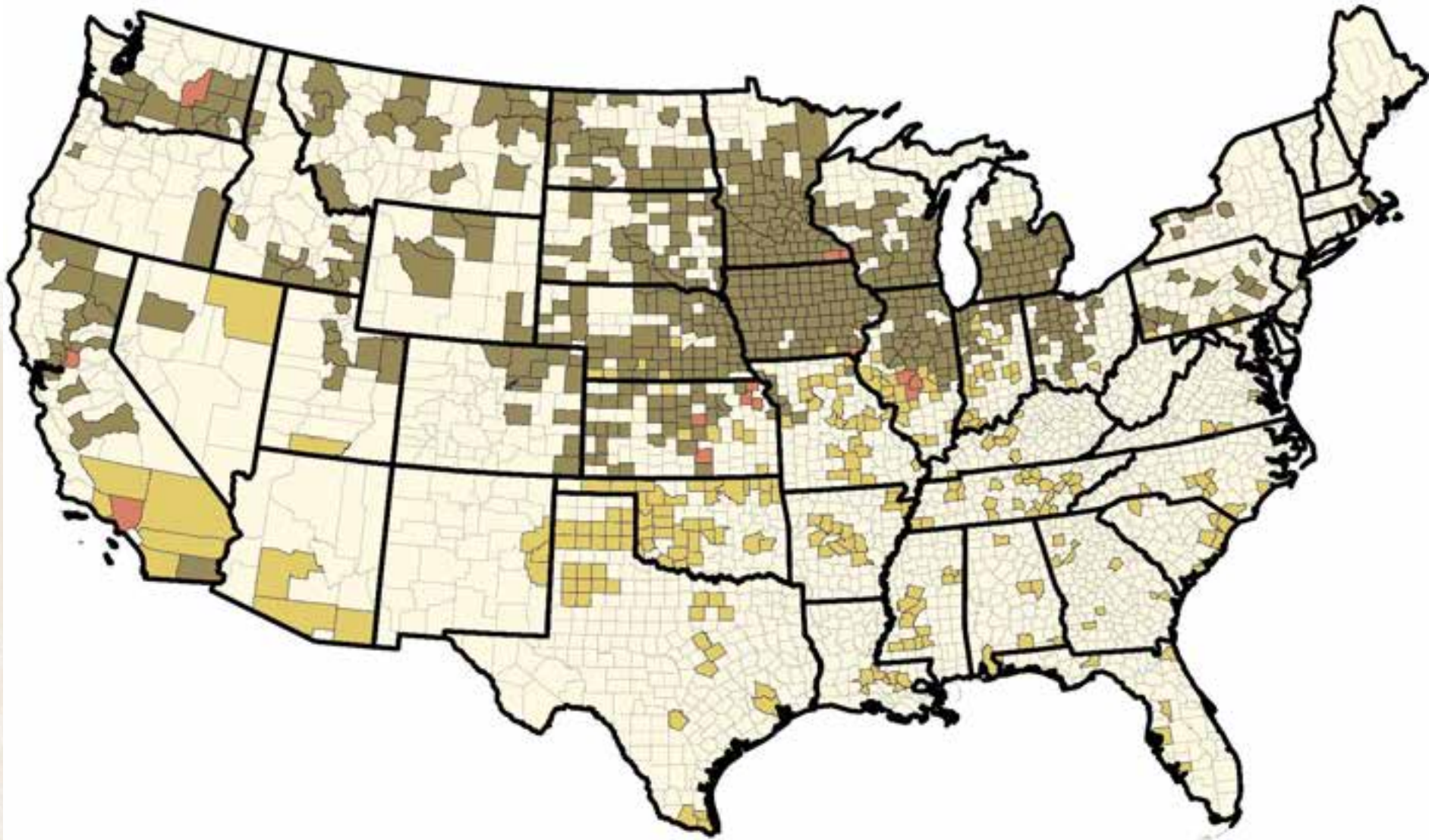
419.569.1096

[www.pheasantsforever.org](http://www.pheasantsforever.org)

[www.quailforever.org](http://www.quailforever.org)







- **750 Chapters (600 PF – 150 QF)**
- **145,000 Members**









# Working Lands for Wildlife Target Species and Projects





- Lake Erie and Ohio alega blooms
- Concerns for delivery, lack of focus on Wildlife, GROW Act, Peterson/Thune about the only one mentioning it, but issues there. Jen involved in meetings and conf calls. Admin not interested in meeting with us, or even following 2018 FB managers suggestions.
- The most concerning current implementation then baseline
- We've got 2B of EQIP, \$450M of ACEP, RCPP annually -
- What can we do? Work with the delegations in your states.
- Emergency EQIP/Conservation throughout mid-west. Locally working with famers to put in some millet/mow foxtail/ragweed for dove fields. Open for fall hunting?
- Emericay EQIP/Conservation on PP acres.

