

Uncommon Partnerships



ODOT is Centerline Focused

- ODOT has 19,000 miles of roadsides comprising 260,000 acres
- ODOT has limited time and resources
 - ODOT currently spends \$19M per year on mowing
 - Restoration sites cost \$400 per acre up-front for seed and herbicide
 - After sites are established, maintenance costs are nearly \$0 per year!

Currently:

- 120 projects in development totaling 1,200 acres: 800 acres are active projects, 400 acres are legacy
- At least one project in each of our 12 districts and hope to have one project identified in every county by 2020 mowing reduction plan saved taxpayers \$2.2 the first year
- Per our CCAA agreement, we will establish 150 new acres on high-value pollinator habitat each year. Relying heavily on public-private partners who can provide assistance





Action Summary

- OPHI- Statewide Milkweed Pod collection
- Pollinator Partnership- Project Wingspan
- OPHI/ODOT- 59k acres (2018)
- ODOT – saved \$2.2M (reduced mowing)
- ODNR Wildlife Areas –58k acres (since 2014)
- Cincinnati Nature Center – 300k milkweed packets (since 2014)
- First Energy – research on rights of way
- Great Parks of Hamilton County – native seed nursery
- Pheasants Forever –Creation of affordable Statewide mixes exceeding Pollinator and Monarch Standards
- USDA-NRCS and FSA- Statewide Monarch/ Pollinator SAFE



Plant Milkweed!



Giuseppina Croce



Tom Collins

Plant Nectar Plants!

Jim Ellis



Ed Doering



Dave Astin



Judy Kesser



Barbara Powers



Sinep Groent & Aschalse



Three Seasons of Blooming



Monitoring

Monarch Joint Venture- Integrated Monarch Monitoring Program/ ROW Rapid Assessment Protocol



Field Activities & Protocols

Read a brief description of IMMP field activities and download full activity instructions.



Trainings

Learn about and sign up for Integrated Monarch Monitoring Project trainings.



Priority Monarch Blocks Map

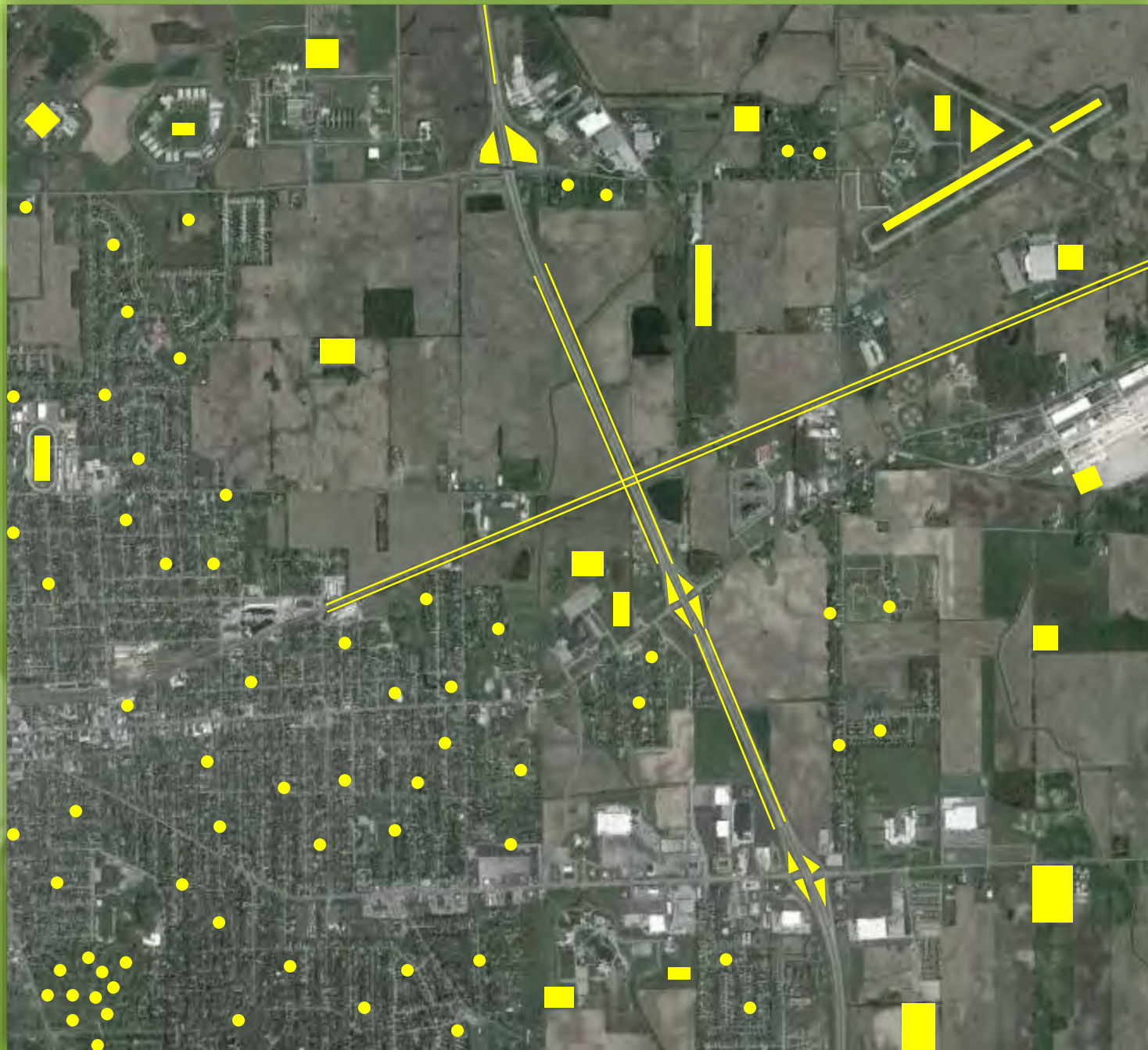
Explore priority monarch monitoring areas (randomized 10x10 km 'Monarch Blocks') designed to guide national monitoring efforts.

<https://monarchjointventure.org/get-involved/mcsp-monitoring>

We are all part of the Solution

- Pollinators and other animals face many challenges in the modern world for many reasons:
 - Habitat loss
 - Disease
 - Parasites
 - Environmental contaminants, etc..

Working across the state with multiple partners including agricultural producers to improve conservation practices that are mutually beneficial is key!



Opportunity Areas

- CRP, WRP
- Roads, Railroads, ROW's
- Schools, churches, businesses
- Parks, golf courses, cemeteries
- Prisons, airports, fairgrounds
- Backyards
- More!

All Hands On Deck

- Urban
- Suburban
- Rural

All you can – Where you can!





Pollinator Symposium Columbus - August 22, 2019

<http://www.ophi.info/>

