



# Habitat Stamp

MAFWA Director's Meeting – June-2022

( 1 )



# Habitat Stamp Legislation

## **41-6-85 Habitat Stamp-Fee-Requirements-Promulgation of rules**

- ❖ \$10 –Resident
- ❖ \$25 – Nonresident
- ❖ Only required to purchase one per license period
- ❖ Exemptions: Under 18, 1-day licenses, youth licenses, Private Shooting Preserves, Landowner

## **41-6-86 Habitat Stamp Revenue-Use and Purpose-Annual Report**

- ❖ Hunting/Trapping Licenses – terrestrial habitat and public access
- ❖ Fishing Licenses – aquatic habitat and public access in public waters
- ❖ Combination Licenses – split evenly between terrestrial/aquatic projects
- ❖ No fee title land acquisition purchases
- ❖ Annual report to Government Operations and Audit Committee



# Revenues & Expenditures

## Habitat Stamp Certification Fund

- ❖ In response to Legislation the new GFP fund source: **3122-696 Habitat Stamp Certification** was created starting in FY21.
- ❖ All revenues and expenditures of habitat stamp fees are tracked and reported through the subfund.

Total Habitat Stamp Fund Revenue: \$9,318,075  
(July 2020 thru May 2022)

Total Habitat Stamp Fund Expenditures: \$4,553,177  
(July 2020 thru May 2022)

Cash Balance as of May 31, 2022: \$4,764,898



# Terrestrial Habitat & Access Projects

Grassland & Pollinator Plantings  
2,157 acres | 47 GPAs

Food Plots  
221 acres | 14 GPAs

Woody Habitat Plantings  
178 acres | 26 sites

Woody/Invasive Mgmt.  
1,281 acres | 13 GPAs

Access Roads & Trails  
11 miles | 13 GPAs

Grassland Mgmt. – Grazing  
1,570 acres | 15 miles | 15 GPAs





# Aquatic Habitat & Access Projects



Access Improvements  
14 Projects | 12 Waters

Access Improvements –  
Engineering  
6 Projects | 6 Waters

Boat Ramp Development  
6 Ramps | 6 Waters

Boat Ramp/Waterfowl access  
1 Project | 1 Water

Dam Repair  
12 Dams | 10 Counties



# Aquatic Habitat & Access Projects cont.



## Docks/Piers

3 Docks | 2 Piers | 5 Waters

## Fish Habitat

16 Projects | 15 Waters

Structures | Aeration |

Dredging

## Native Shoreline Planting

1 Project

## Trail/Access Improvements

5.2 Miles | 7 Trails



Before

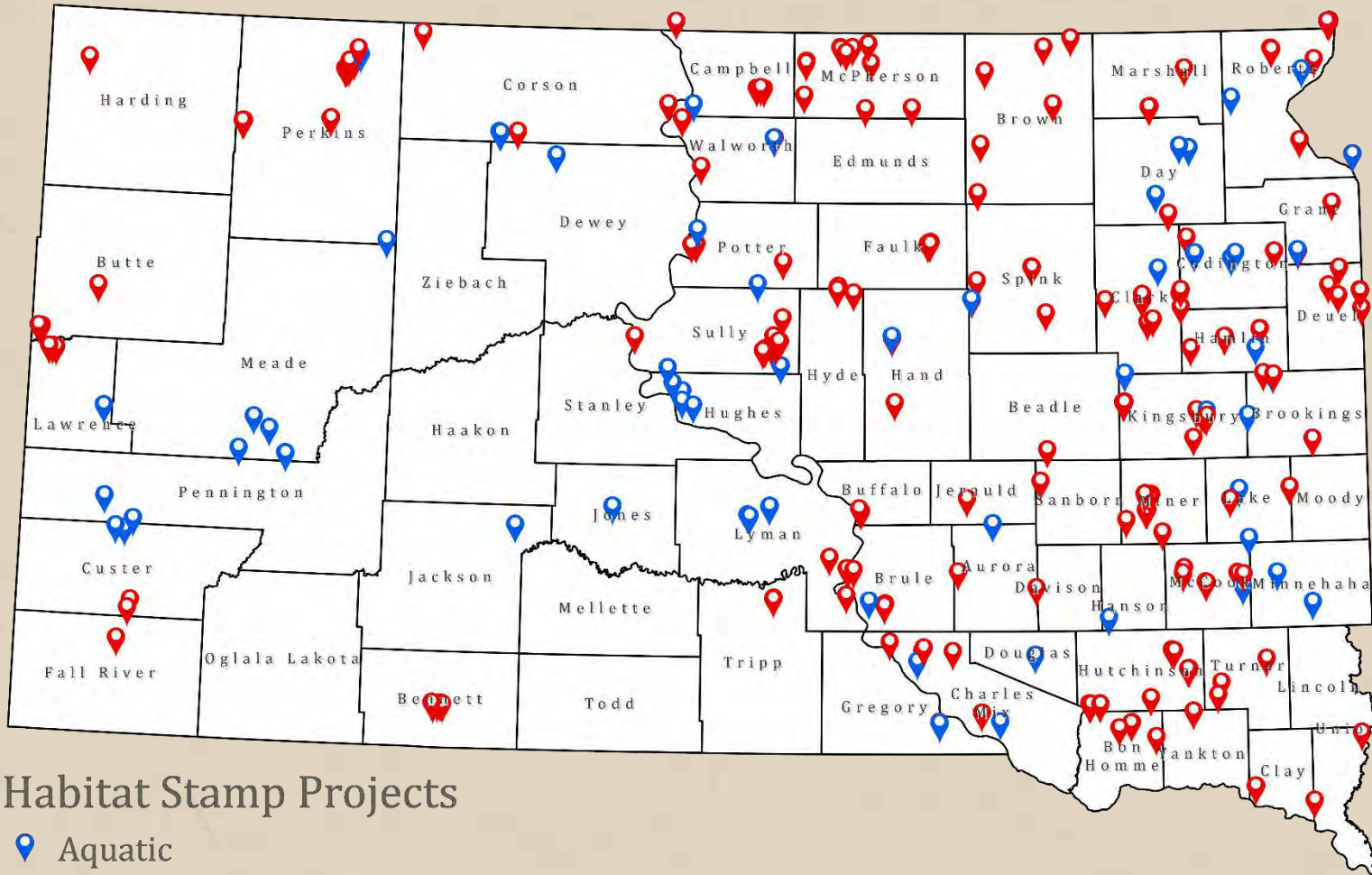


After





# Habitat Stamp Projects Completed



## Habitat Stamp Projects

-  Aquatic
-  Terrestrial



# Habitat Stamp Projects – Moving Forward

- Habitat and Access – Department Priority
- 2018 GPA Assessment
- 3-5 Year Planning





# Terrestrial Habitat & Access Projects

## [In Progress or Planning]



Grassland & Pollinator Plantings

2,064 acres | 37 GPAs

Woody Habitat Plantings

130 acres | 31 GPAs

Woody/Invasive Mgmt.

689 acres | 19 GPAs

Access Roads & Trails

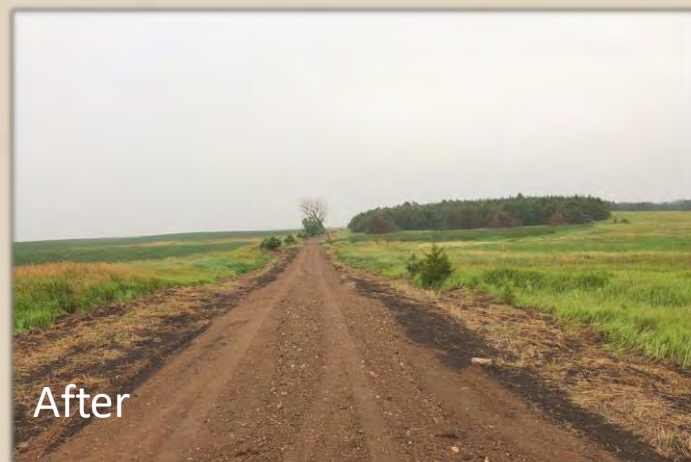
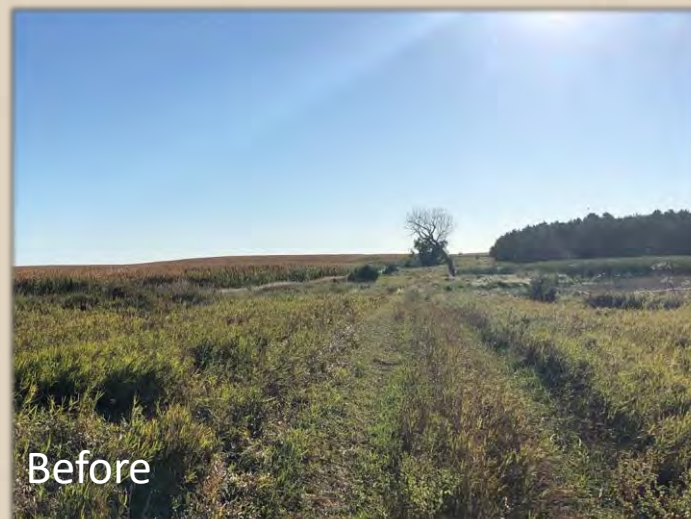
31 miles | 39 GPAs

Waterfowl Access Trails and Ramps

1.4 miles | 10 sites | 11 GPAs

Grassland Mgmt. – Grazing

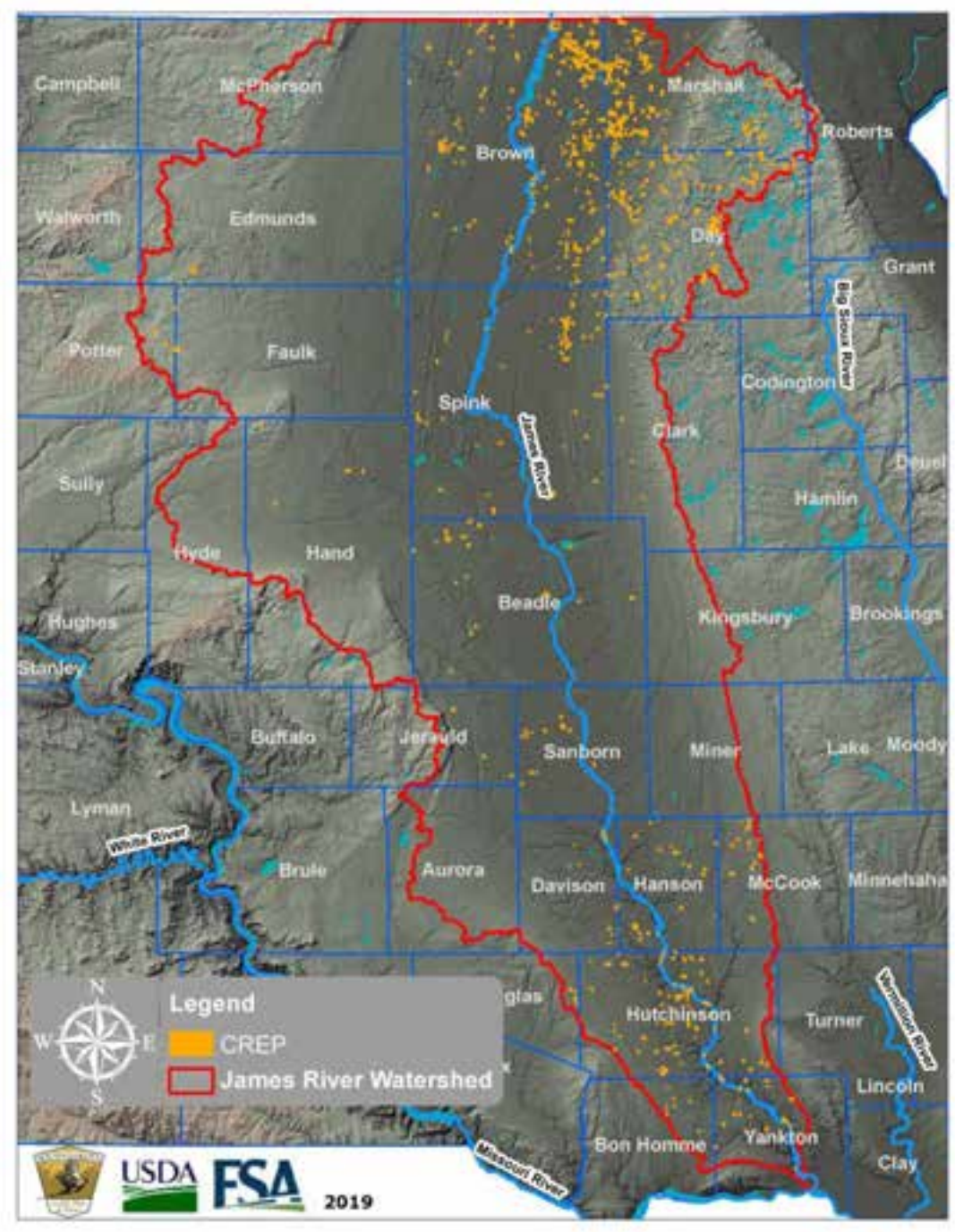
1,480 acres | 20 miles | 22 GPAs



# James River CREP



- Water Quality
  - Erosion
  - Filter
- Wildlife Habitat
  - 250,000+ PH
- Access





# James River CREP



Approximately  
75,000 acres  
requires \$3 million  
per year

Estimated  
\$1.5M/year to  
fully enroll the  
100,000  
acres available in  
the program

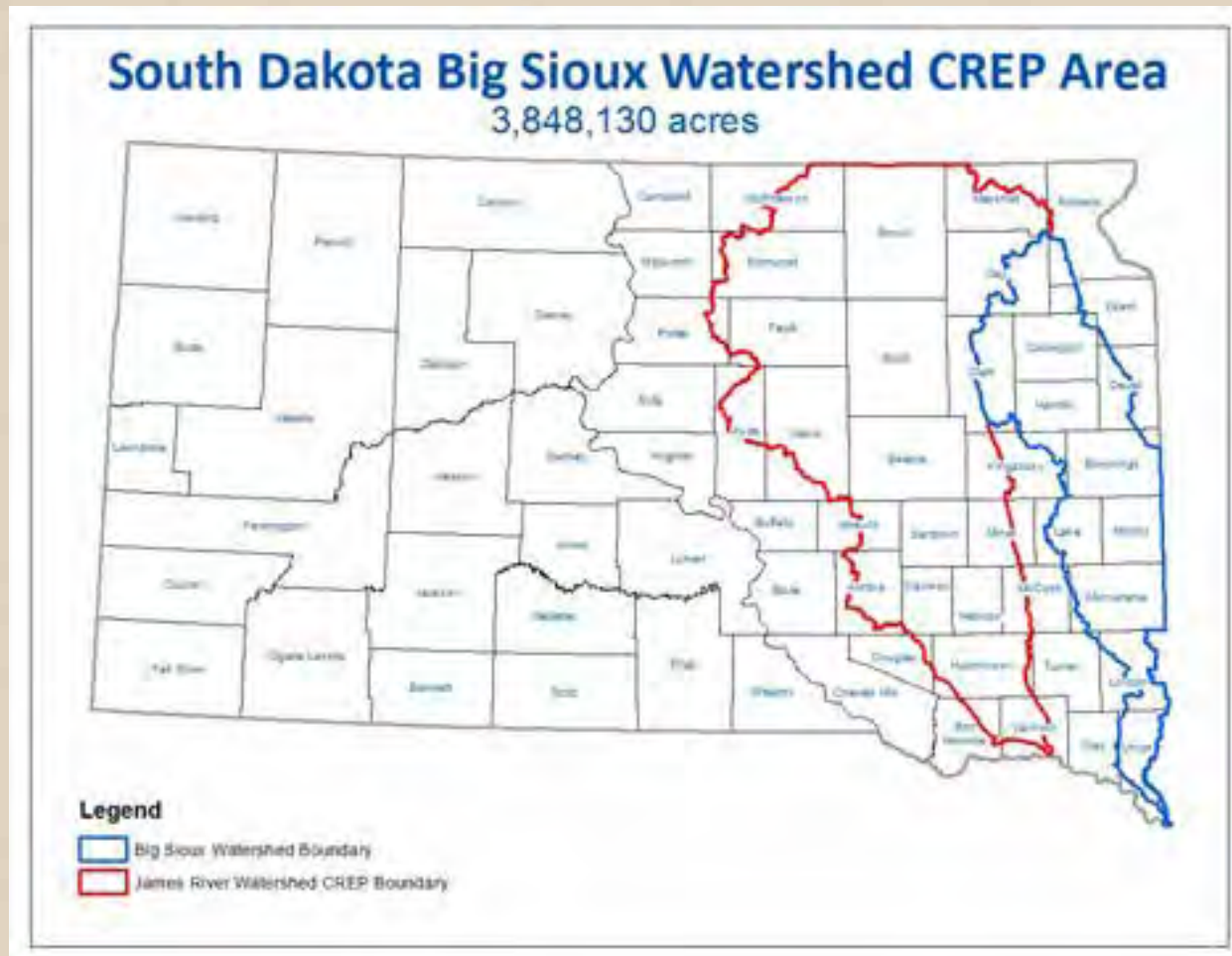




# Big Sioux River CREP



Estimated  
\$1.5M/year  
to fully enroll  
the 25,000  
acres



# Aquatic Habitat & Access Projects

[In Progress or Planning]

Access Improvements

30 Projects | 28 Waters

Access Improvements – Engineering

2 Projects | 2 Waters

Boat Ramp Development

6 Projects | 6 Waters

Dam Repairs

11 Dams | 9 Counties

Docks/Piers

8 Docks | 8 Piers | 15 Waters



# Aquatic Habitat & Access Projects

[ In Progress or Planning ]

## Fish Habitat

10 Projects | 10 Waters

Aeration | Dredging | Fish Passage | Structures

## Native Shoreline Planting

1 Project

## Trail/Access Improvements

3-5 Miles | 6-10 Locations

## Urban Fishery Development

3 Project

## Restoration

1 Project | Newell





