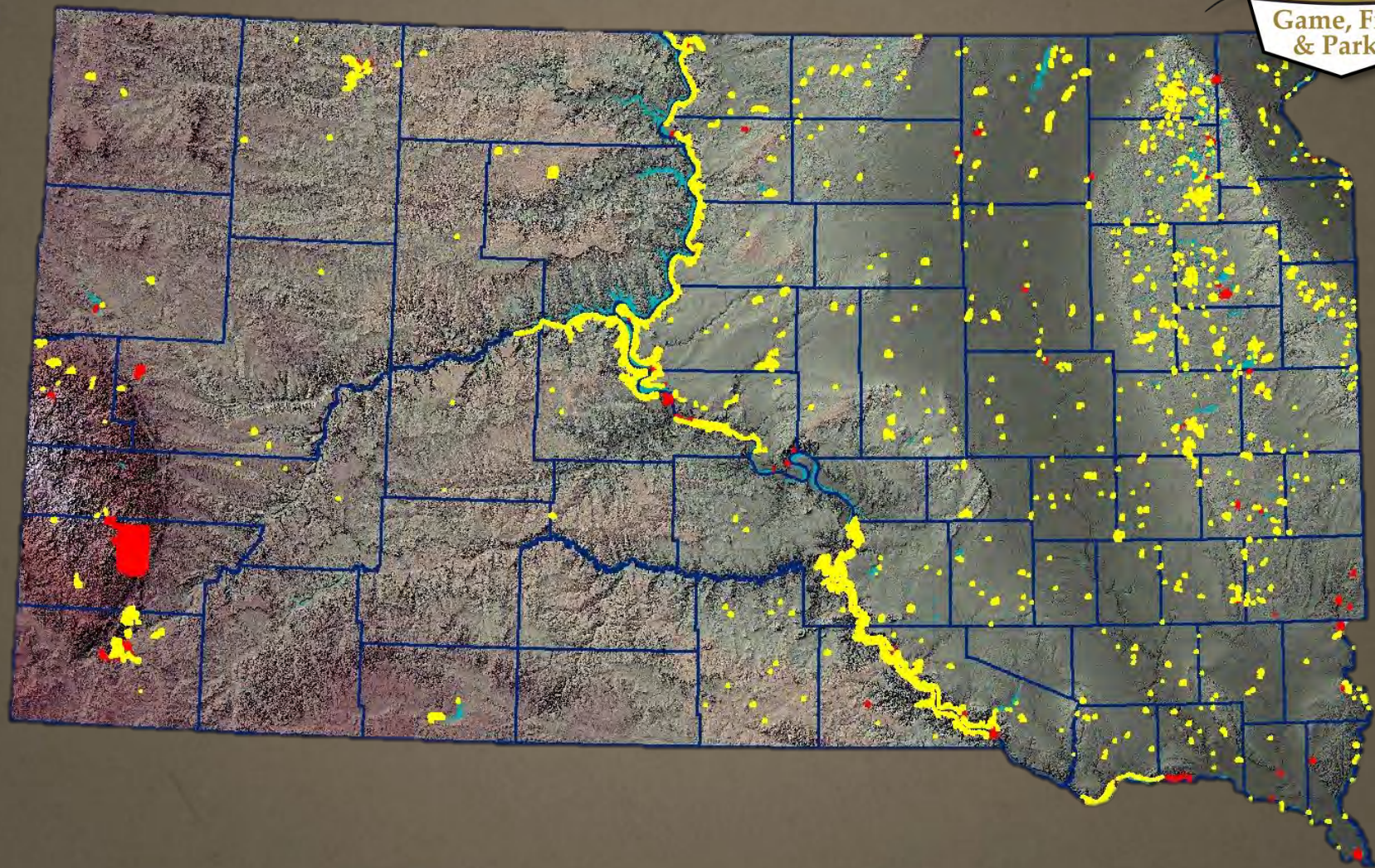




SOUTH DAKOTA GAME, FISH and PARKS

Game Production Area Management

Midwest Association of Fish and Wildlife Agencies
Custer, SD – June 2022



Game, Fish & Parks has been purchasing public shooting areas or GPAs for 95 years

The first public shooting area was a small parcel at Hedke's Pass in Day County, purchased as a duck hunting pass in 1927.

In 1941 the South Dakota Legislature set aside a portion of each non-resident hunting license for the acquisition of public shooting areas

Since then, Game, Fish & Parks has acquired over 286,000 acres of Game Production Areas.



Priorities...

High quality hunting lands

Additions to existing GFP lands

Lands providing lake and river access
for hunting and fishing

Important habitat types and
landscapes

Parcels needed for planned facility
expansion

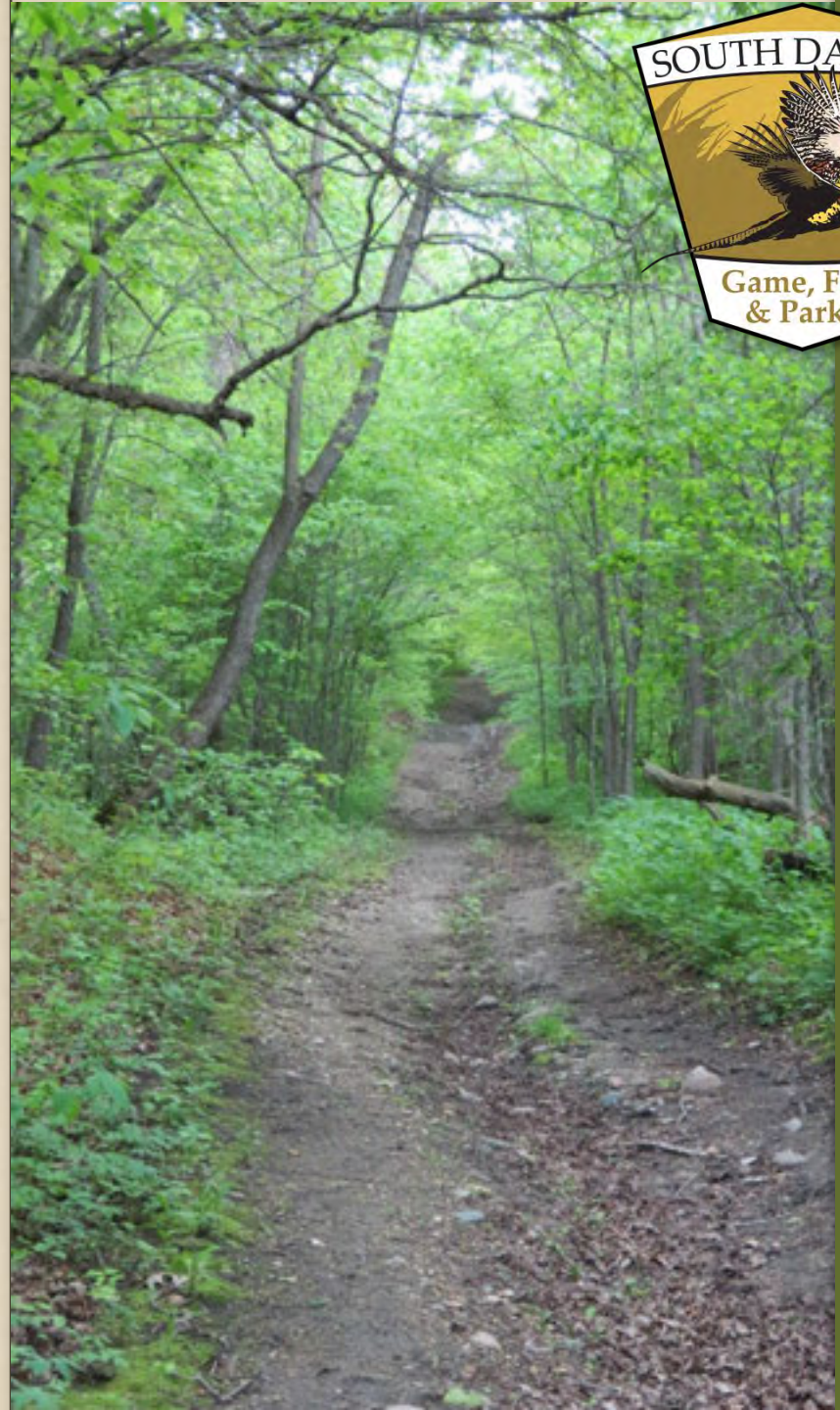


Management...

Game Production Areas are managed as wildlife habitat and to provide free public access to hunting and angling opportunities.

Approximately \$5 million is spent annually operating, maintaining, and developing the wildlife habitat and public use facilities.

Funding for OM&D activities is from hunting license revenues, Habitat Stamp funds, and Federal Aid, with no general state tax revenues used.



Management issues & challenges

Noxious weeds

Loss of control

Compatible uses

Archeological and cultural resources

Easements

Management direction related to species needs

Staffing

Expanding diversity of uses and users



Management opportunities

Funding for wildlife habitat

Expanding diversity of uses and users



Internal Evaluation Process

Where are we now and where do we want to be – short and long term?

- Cost estimates
- Human resources needs
- Equipment needs



GPA Habitat and Public Use Internal Ratings



	Habitat	Public use
Average	6.2	6.4
Maximum	10	10
Minimum	1	1



Project Needs Summary

- Public access roads, trails, and parking areas
- Fishing access, boat ramps, fishing piers, and other associated amenities
- Native prairie and rangeland renovations, restorations, reconstructions, and management - including infrastructure for managed grazing
- Pollinator plots
- Prescribed burning
- Woody cover plantings
- Wildlife friendly fences
- \$19M



Human Resources Needs Summary

- Noxious weed control
- Cultural resources monitoring
- Prescribed burning program
- Administrative support
- 40+ FTE



