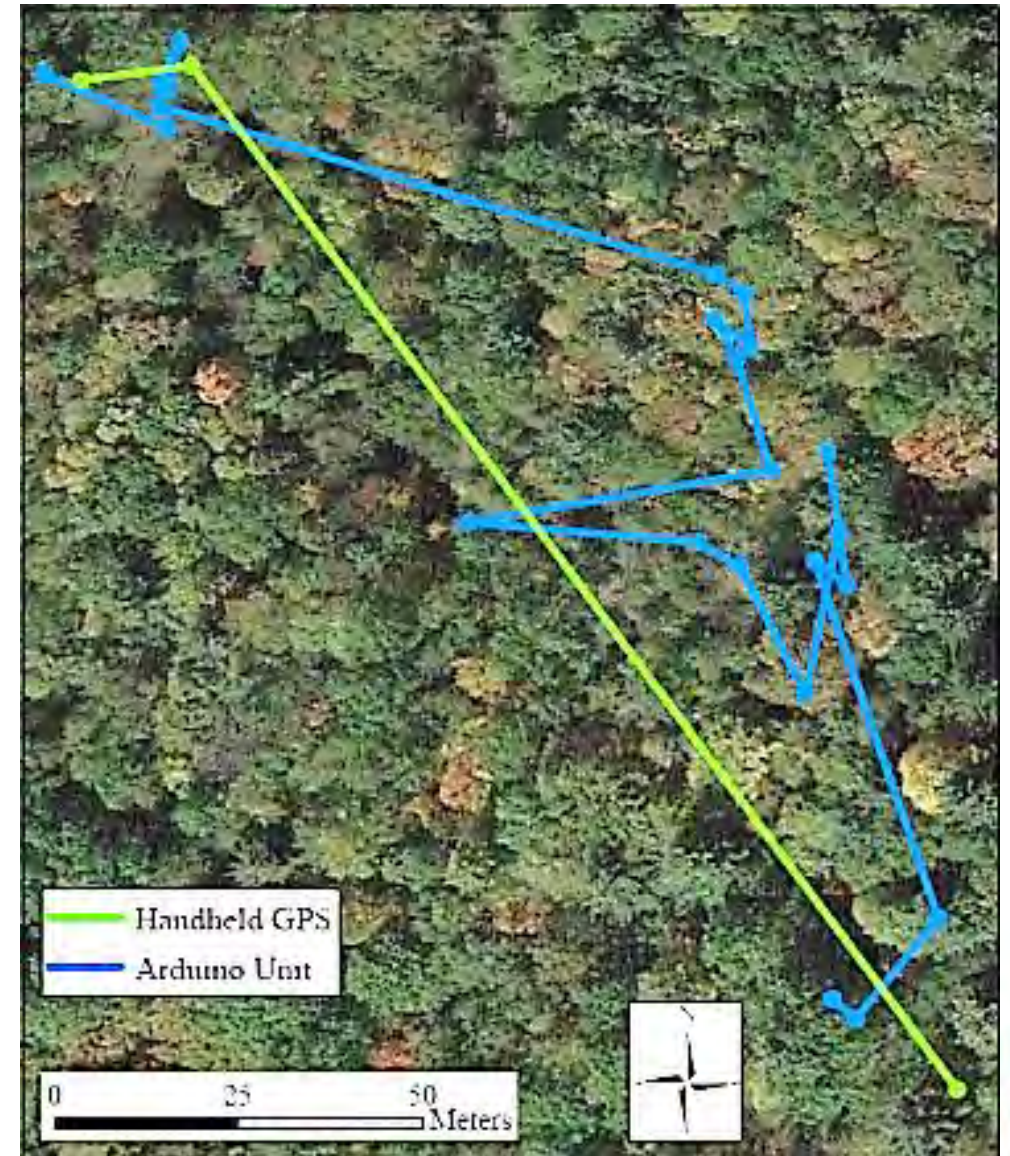


# GPS

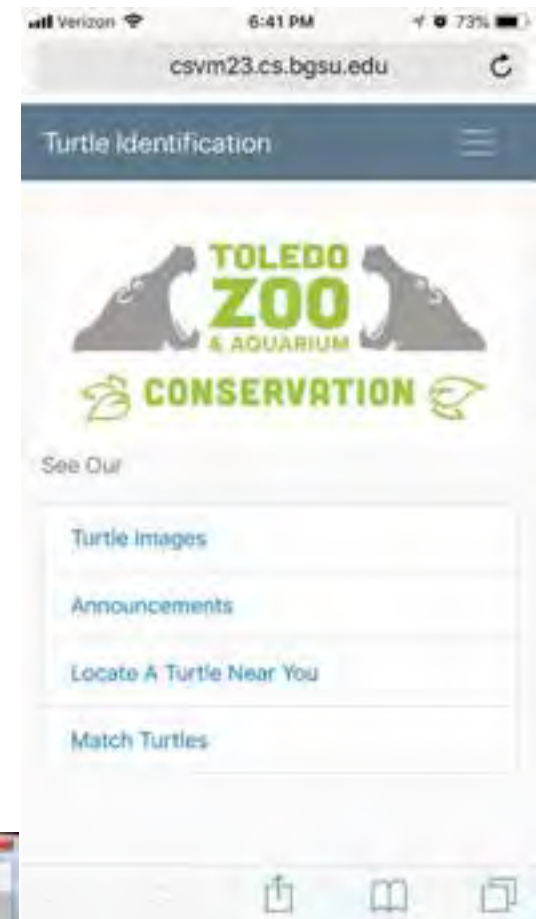
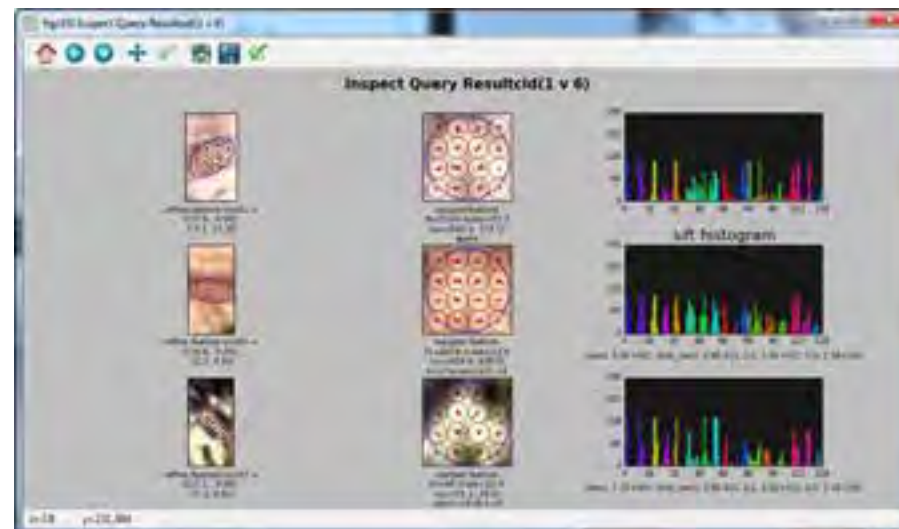
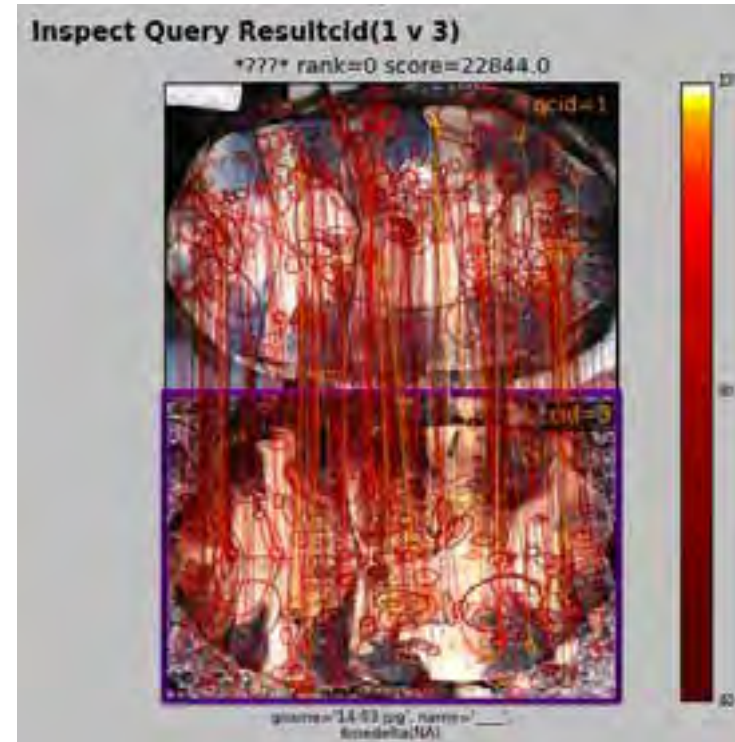






**TOLEDO**  
**ZOO**  
& AQUARIUM





**TOLEDO ZOO & AQUARIUM**









**TOLEDO**  
**ZOO**  
& AQUARIUM



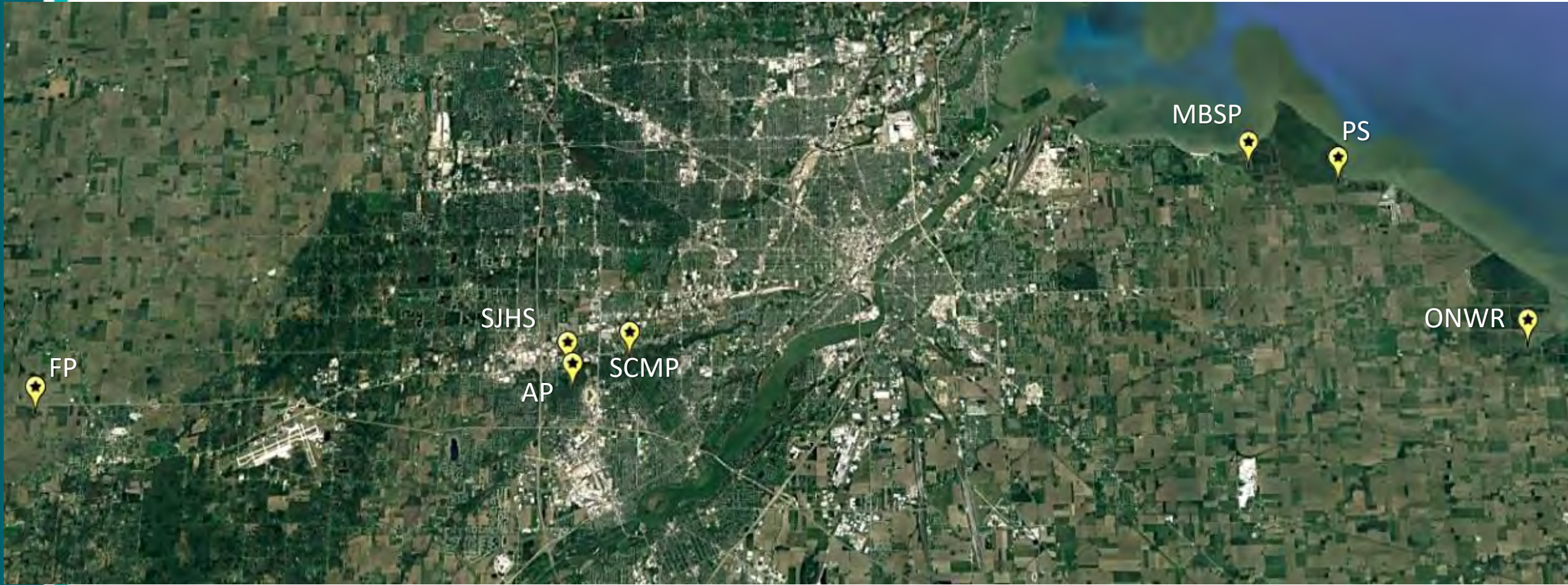




# Kirtland's Snake Initiative



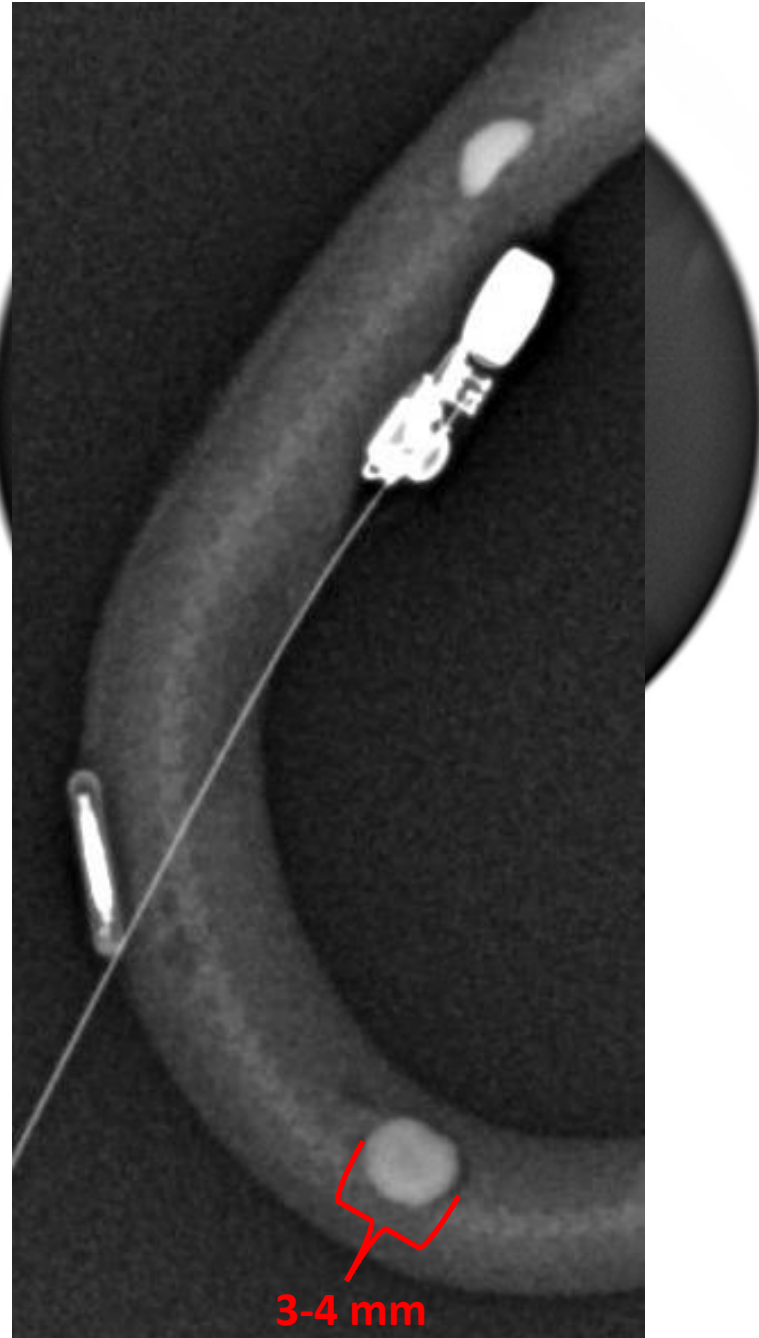
















***CLONOPHIS KIRTLANDII*** (Kirtland's Snake). USA: OHIO: FULTON CO. (Coordinates withheld due to conservation concerns). 4 September 2017. Matthew D. Cross and Joshua C. Morrison. Verified by Jeff Davis, Cincinnati Museum of Natural History (CMC HP 9739-9742). Four individuals were found and photographed under artificial cover objects placed by Toledo Zoo staff as part of statewide survey efforts for *C. kirtlandii*. This location is a new county record for this species in Ohio (Wynn and Moody 2006. Ohio Turtle, Snake, and Lizard Atlas. The Ohio Biological Survey, Columbus, Ohio. 80 pp.). Our observation is 20.8 airline km West of the nearest previously documented locality in the northwestern region of Ohio (Wynn and Moody, *op. cit.*).

**MATTHEW D. CROSS**, Conservation Department, Toledo Zoo and Aquarium, Toledo, Ohio 43614, USA (e-mail: [matt.cross@toledo zoo.org](mailto:matt.cross@toledo zoo.org)); **JOSHUA C. MORRISON**, Whitehouse, OH 43571.





# Hellbender Initiative

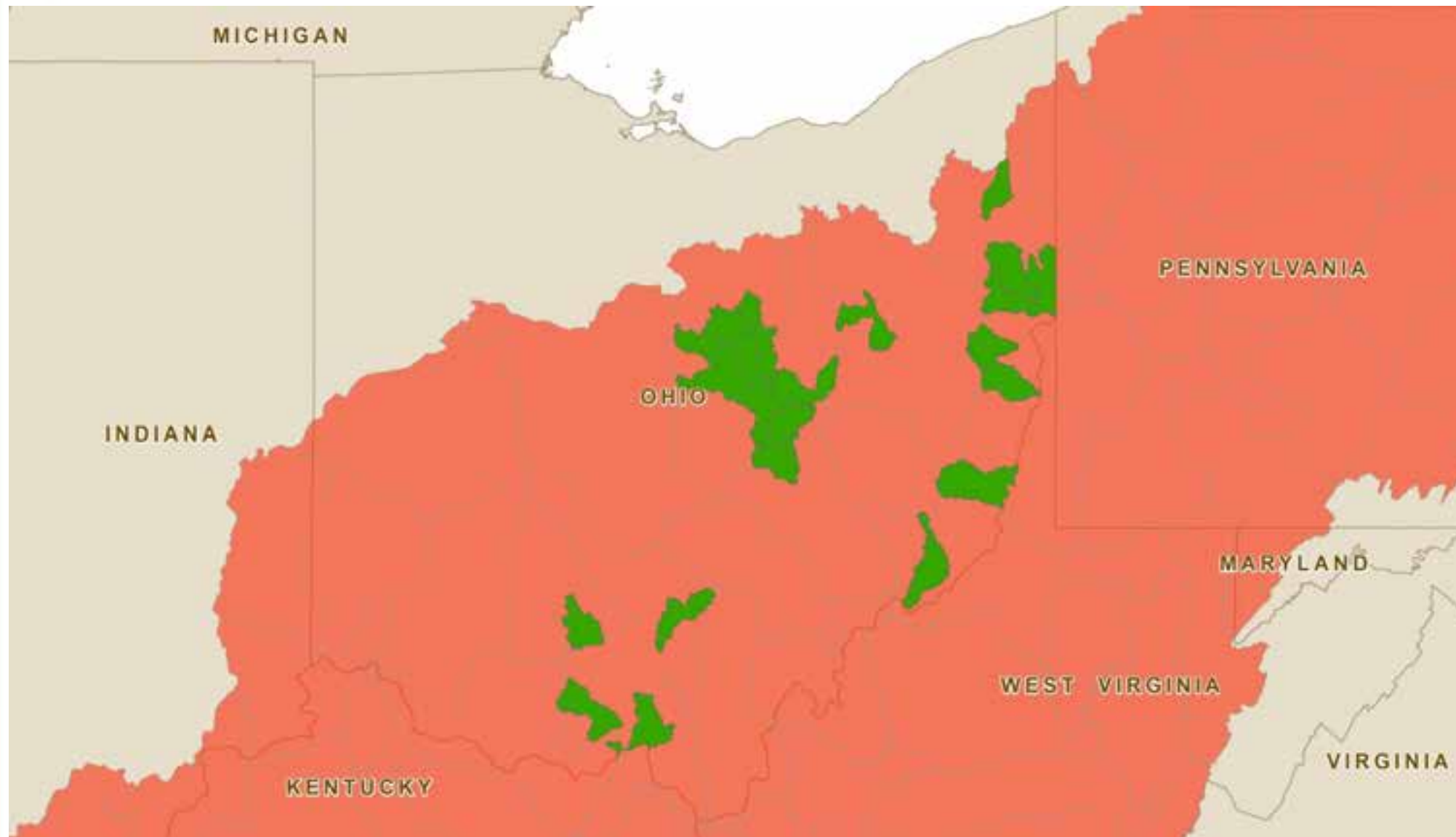


**TOLEDO**  
**ZOO**  
& AQUARIUM











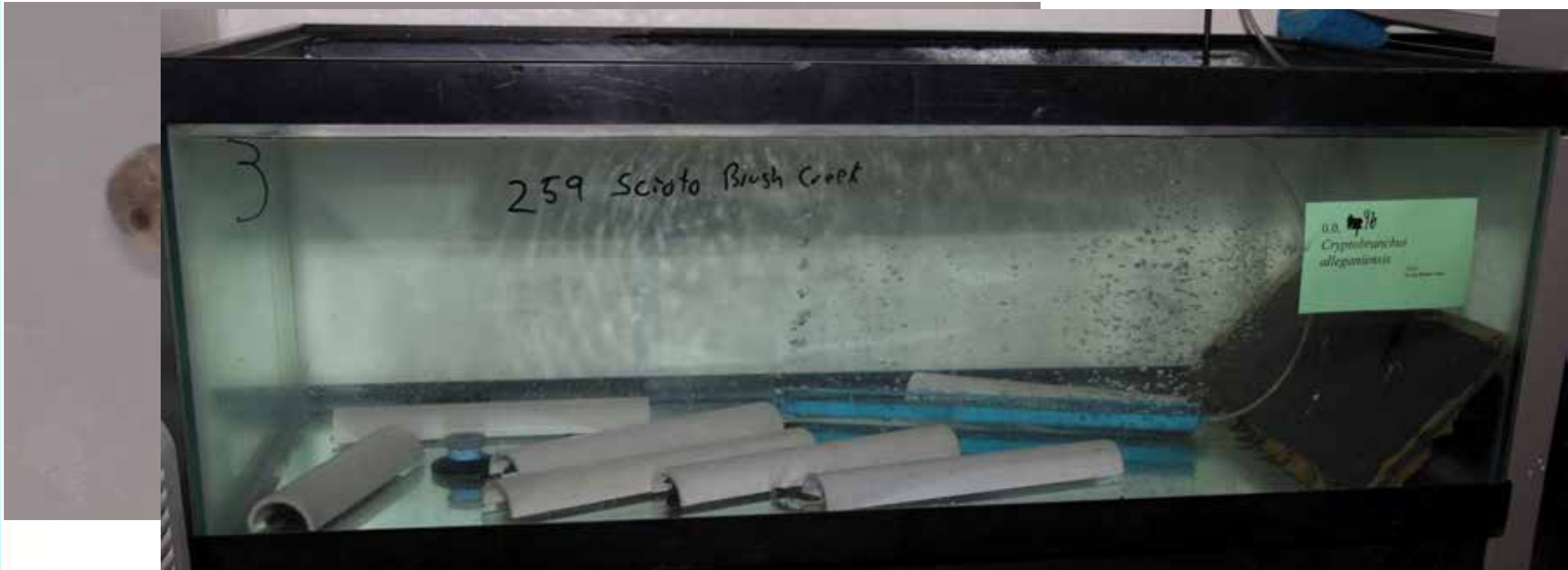
# Egg Collection













7 Months



1 years 7 Months



2 years 7 Months









